

Partner A _____ Partner B _____ Date _____

Famous Virginian Marionettes

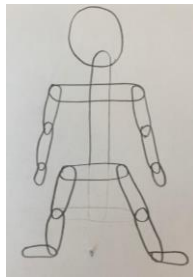
What is the driving question? _____

Who is your famous American? _____

Constraints: 1. Arms that move 2. Legs that move 3. Control of movement in legs 4. Control of movement in arms 4. Clothes and features to represent a likeness to your famous Virginian 5. Skit to act out with your famous American

Materials: 1. Popsicle Sticks 2. Brass fasteners 3. Glue 4. Fabric Scraps 5. Fishing Line 6. Assorted craft supplies

Tools: 1. Ruler 2. Scissors 3. Easy Cutter 4. Crop-a-dile 5. Hot glue gun 6. iPad or recording device



Planning the Body Structure

Step 1: Use your proportion sketch from art. Plan out the sections needed to create a marionette with moving arms and legs.

Step 2: Measure the length of each piece needed and record below. Be sure to write how many you need. (Example: There are two arm and two legs)

Neck and Body: _____

Shoulders: _____

(2) Upper arms: _____

(2) Lower arms: _____

Hips: _____

(2) Upper Legs: _____

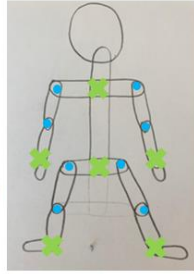
(2) Lower Legs: _____

Step 3: Collect the needed number of popsicle sticks. Measure the sticks for each part. Be sure to label all sticks with the part they will be used for in the marionette.

Step 4: Using the cutters begin cutting the body parts to length. Remember to cut carefully!

Step 5: Lay out all pieces on your drawing to make sure they match.

Step 6: Mark all "joint locations" using a marker to know where to punch using the Crop-a-dile. Mark all pieces that need to be glued as they do not need to move.



Creating the Body Structure

Step 1: Using the Crop-a-dile punch a hole in all locations marked with a marker as your joint locations.

Step 2: Decide how many brass fasteners you will need. There will be 1 fastener for each joint. Collect that number from the teacher.

Step 3: Use the fasteners to attach the two joint pieces together. One fastener will go through both pieces and you can pull the arms apart to secure.

Step 4: Using hot glue attach neck, shoulders and hips. Also be sure to add hands and feet.

Creating the Costume

Using your research you will create a costume for your marionette to resemble your famous Virginian.

Things to remember:

- Your costume must allow your marionette to still move.
- Your costume must be appropriate for your marionette and what that person would wear when alive.

What do you know about the time period
in which your marionette lived?
What did clothing look like?

What will the costume look like?

- Step 1: Use paper to create a face of the correct size and attach to the neck.
- Step 2: Use tissue paper to create a pattern for your marionette's clothing.
- Step 3: Pick fabric that corresponds to your marionette's costume.
- Step 4: Cut out costume using tissue paper pattern.
- Step 5: Attach costume using hot glue.
- Step 6: Attach hair and other accessories to your marionette.



Planning the Control Mechanism

Step 1: You will need to attach fishing line to each arm and leg to allow for movement. Be sure to add at **least 6 inches above the head**.

Length of arm strings needed: _____

Length of leg strings needed: _____

Length of head string needed: _____

Step 2: Collect the correct lengths of string from the teacher.

Creating the Control Mechanism

Step 1: Using 2 popsicle sticks create a "plus-sign" glued in the middle.

Step 2: Using the crop-a-dile, punch holes in the end of each popsicle stick. 4 holes in all.

Step 3: Attach the fishing line to each arm and leg and then to the control mechanism.

Check – Do the arms and legs move as you push and pull on the control mechanism?

What improvements need to be made to perfect your marionette?

Testing and Reflection

How tall is your marionette? _____

Do the arms move? YES NO

Can you control the arms with a string? YES NO

Do the legs move? YES NO

Can you control the legs with a string? YES NO

Is your design neat? YES NO

Do you have a working marionette that is ready for clothes? YES NO

Answer the following questions with your group.

One thing that went well during building is _____

A change we will make to our design is _____

We communicated well when we _____

We could communicate better if we _____
